

# AMSTAT Business Aircraft Preowned Market



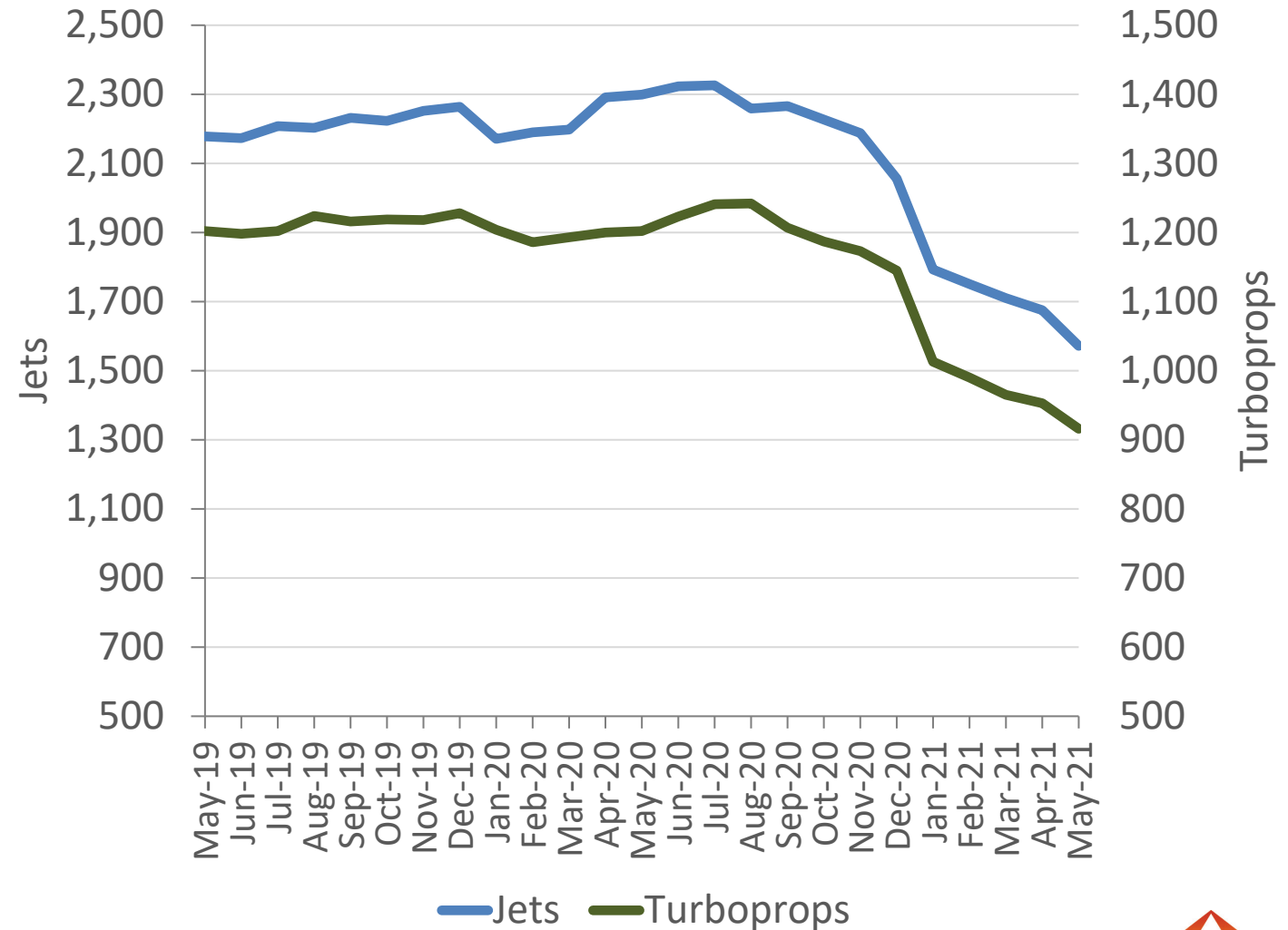
June 1, 2021

# Preowned Inventories Continue To Shrink

- Business Jet inventories are down 32% year-over-year and 33% versus their 10YMA\*.
- Business Turboprop inventories are down 24% year-over-year and 23% versus their 10YMA\*.
- By Size, the greatest reductions year-over-year have been in the Light Jets (-31%) and Medium Jets (-30%).
- By Age, the market is split. Smaller aircraft markets (Turboprops and Light Jets) have seen the greatest reduction in resale inventory year-over-year in the Mid-Age and Older market segments. In the Mid and Larger aircraft markets (Medium and Heavy Jets) have seen the greatest reductions in resale inventory in the Newer market segments.
- All markets have seen resale inventories contract significantly year-over-year.

There are fewer options for buyers looking for younger mid-sized aircraft.

*\*10YMA – 10 Year Moving Average*

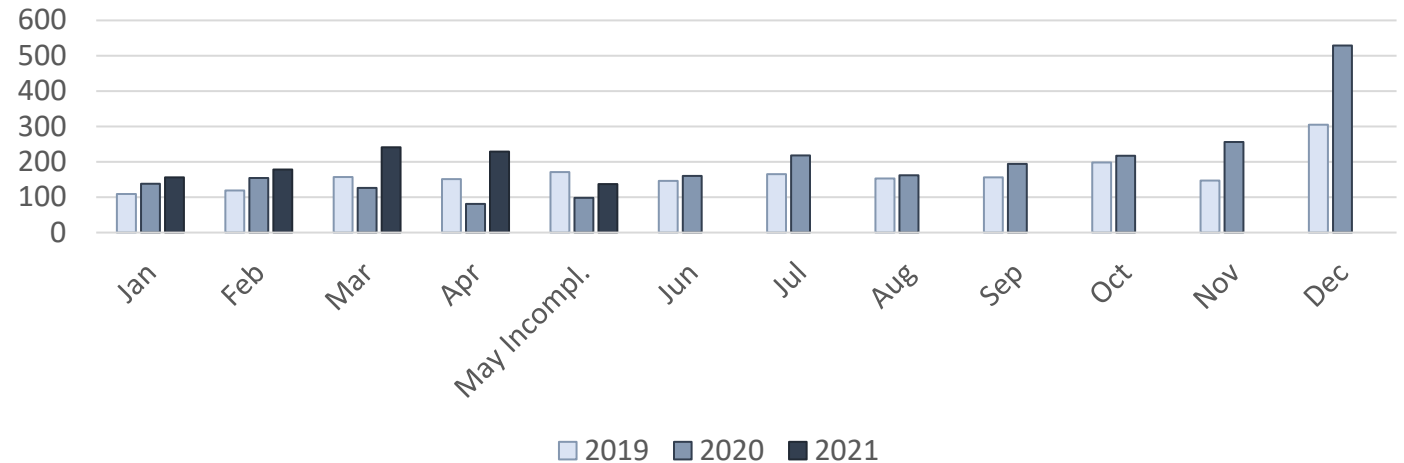


# Resale Transaction Momentum Continues

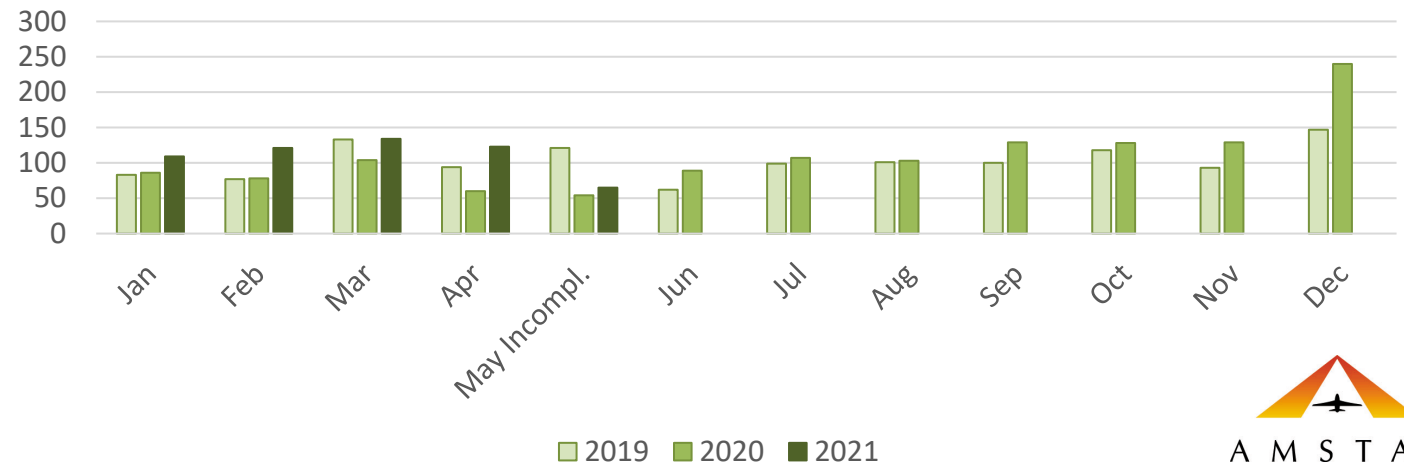
- Business Jet resale transactions YTD 2021 have exceeded the same period in 2020 by 58% even with incomplete May data.
- Business Turboprop resale transactions YTD 2021 have exceeded the same period in 2020 by 45% even with incomplete May data.
- By Size, all market segments YTD have seen significant increases over the same period in 2020. For example, resale transactions were up 68% for Light Jets and 59% in the Medium Jets.
- By Age, all segments have outperformed 2020 YTD. Of note, the 123% year-over-year change in Newer Light jets and 103% increase in the Newer Medium Jets.

Lighter, mid-age and newer markets continue to be the preferred targets for buyers.

Business Jet Resale Retail Transactions



Business Turboprop Resale Retail Transactions

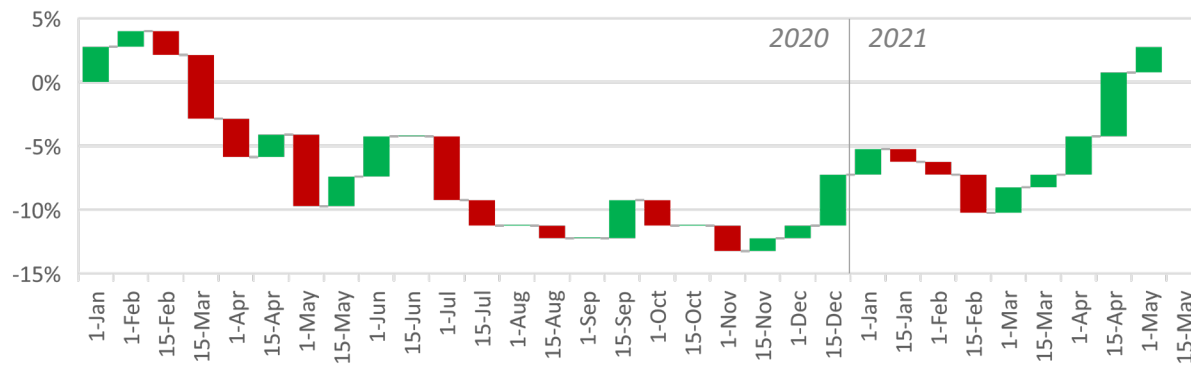


# Median Resale Values Continue To Recover

Continued increased demand and contracting supply has been enabling median values to increase across all market segments.

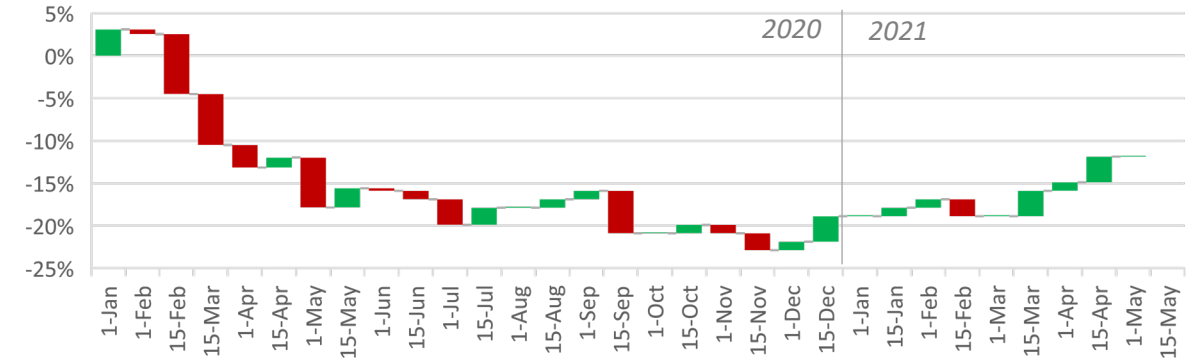
## Turbo-Props - Short Term Median Values

■ Increase ■ Decrease



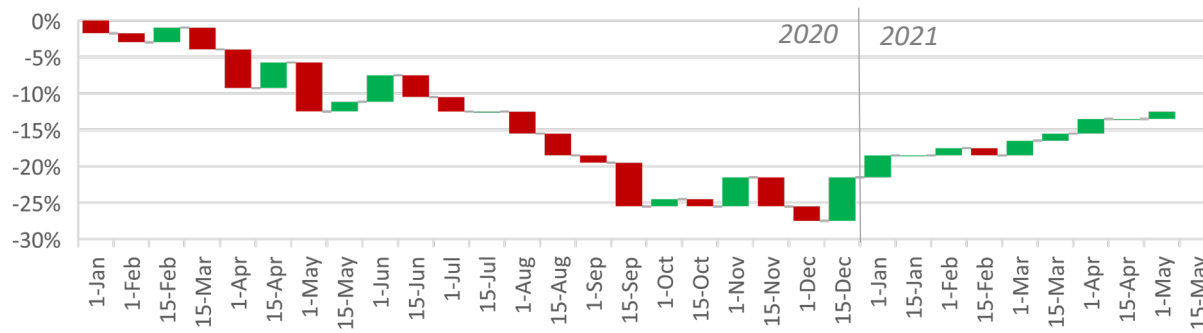
## Medium Jets - Short Term Median Values

■ Increase ■ Decrease



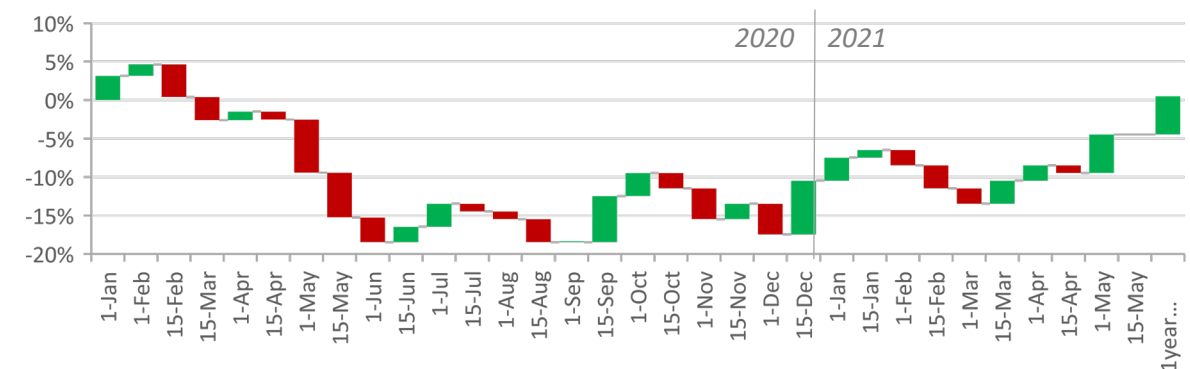
## Light Jets - Short Term Median Values

■ Increase ■ Decrease



## Heavy Jets - Short Term Median Values

■ Increase ■ Decrease



### Notes:

Inventory and transaction data provided by AMSTAT Premier.

Aircraft value data provided by the AMSTAT Aircraft Valuation Tool\* module for Premier.

### Segment Definitions:

Light Jets: <=20,000lbs

Medium Jets: 21-40,000lbs

Large Jets: 41,000lbs+

Newer Jets: <=10 Years

Mid-Age Jets: 11-20 Years

Older Jets: 21+ Years



For more information contact AMSTAT on (US) 877-426-7828 //  
(Int'l) +1 732-530-6400 or [sales@amstatcorp.com](mailto:sales@amstatcorp.com)

*\*A partnership between AMSTAT and VANGAS.*